



File #

3-H-24-VA



**BOARD OF ZONING APPEALS APPLICATION**

**\*\*\*\*\*OFFICE USE ONLY\*\*\*\*\***

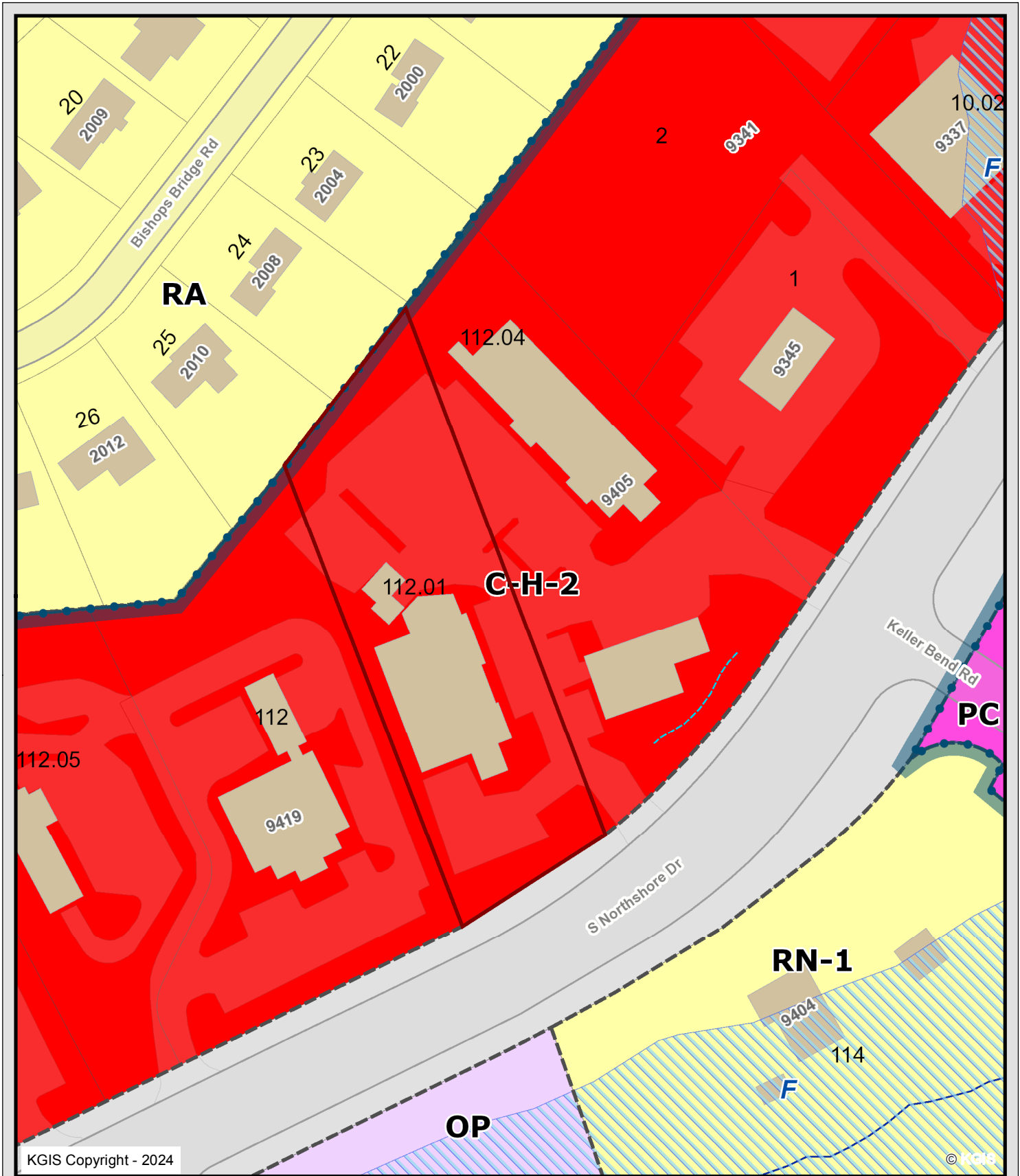
Is a plat required?    Yes      No  

**VARIANCE REQUEST(S) WITH ORDINANCE CITATION(S):**

*(This area is currently blank for the variance request details.)*

**PROJECT INFORMATION**

Date Filed	Fee Amount
Council District	BZA Meeting Date
<b>PLANS REVIEWER</b>	<b>DATE</b>



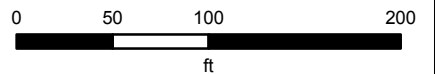
9411 S NORTSHORE DR

3-H-24-VA  
LARA SIEVERS

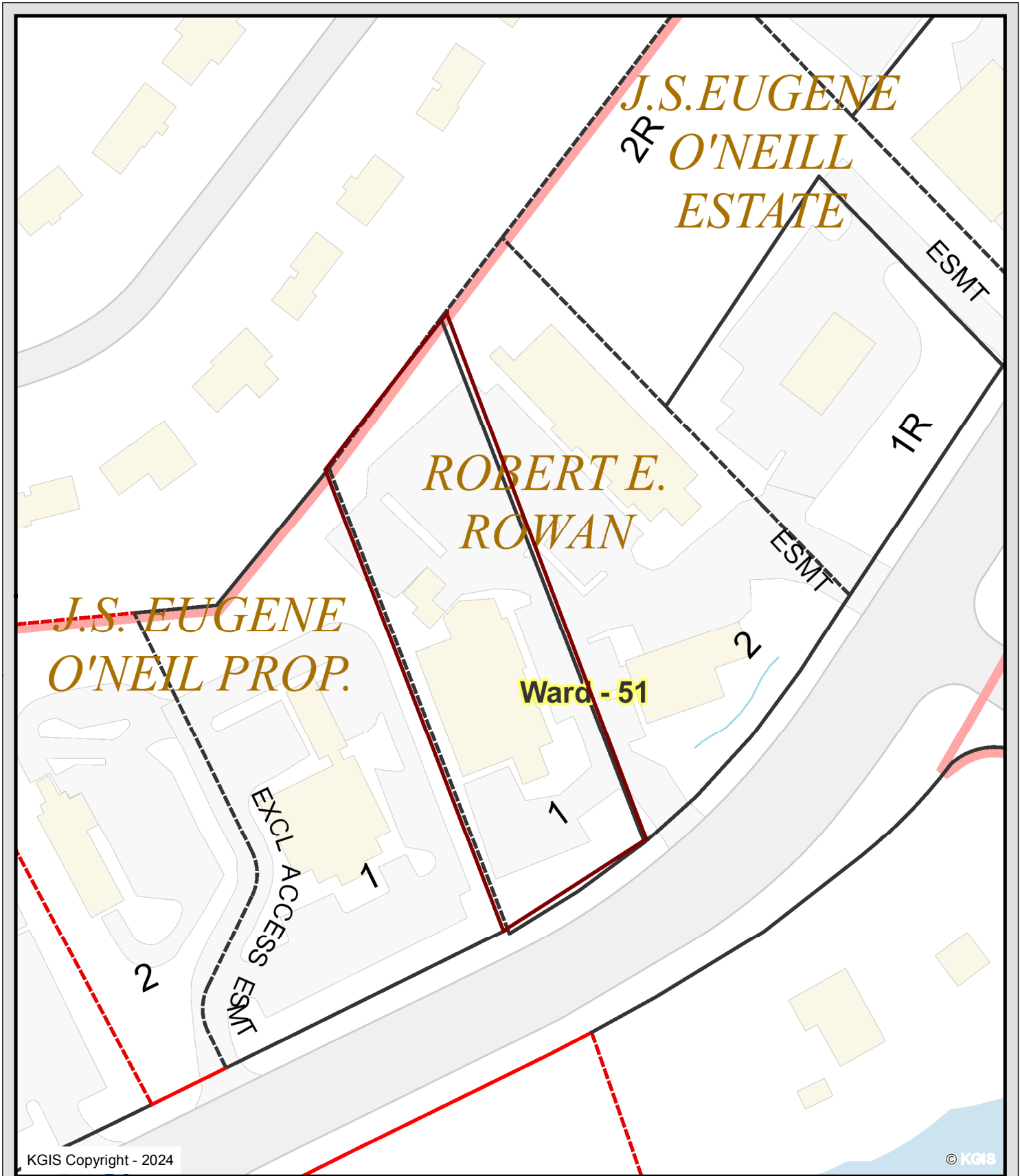
Knoxville - Knox County - KUB Geographic Information System



Printed: 2/13/2024 at 6:53:59 AM



KGIS makes no representation or warranty as to the accuracy of his map and its information nor to its fitness for use. Any user of this map product accepts the same AS IS, WITH ALL FAULTS, and assumes all responsibility for the use thereof, and further covenants and agrees to hold KGIS harmless from any and all damage, loss, or liability arising from any use of this map product.



KGIS Copyright - 2024

© KGIS

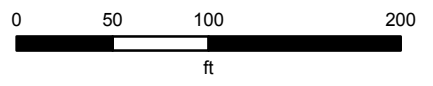
9411 S NORTSHORE DR

3-H-24-VA  
LARA SIEVERS

Knoxville - Knox County - KUB Geographic Information System



Printed: 2/13/2024 at 6:54:33 AM



KGIS makes no representation or warranty as to the accuracy of his map and its information nor to its fitness for use. Any user of this map product accepts the same AS IS ,WITH ALL FAULTS, and assumes all responsibility for the use thereof, and futher covenants and agrees to hold KGIS harmless from any and all damage, loss, or liability arising from any use of this map product.





KGIS Copyright - 2024

© KGIS

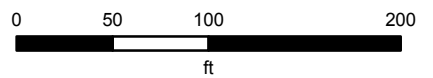
# 9411 S NORTSHORE DR

3-H-24-VA  
LARA SIEVERS

**Knoxville - Knox County - KUB Geographic Information System**

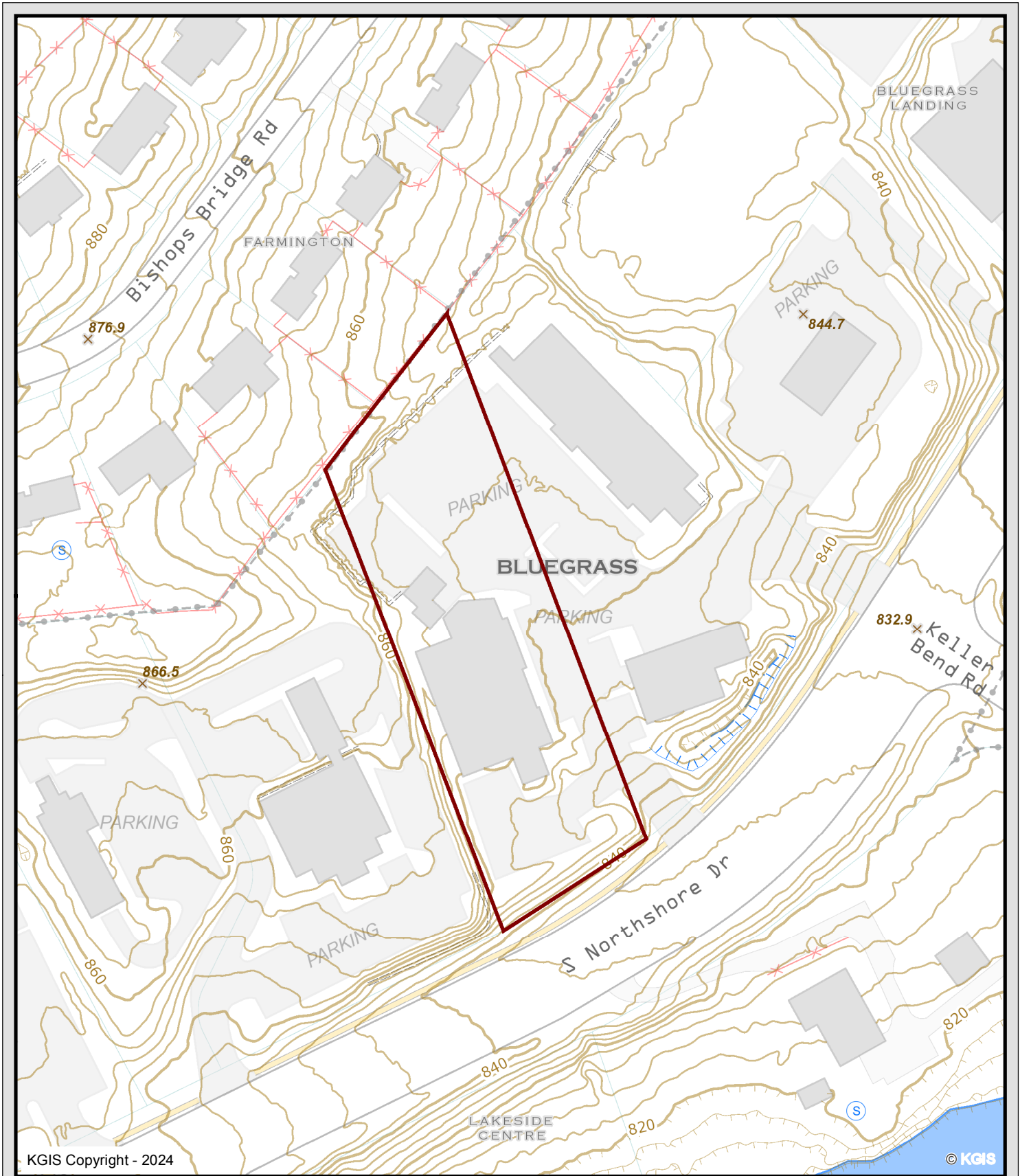


Printed: 2/13/2024 at 6:55:01 AM



KGIS makes no representation or warranty as to the accuracy of his map and its information nor to its fitness for use. Any user of this map product accepts the same AS IS ,WITH ALL FAULTS, and assumes all responsibility for the use thereof, and futher covenants and agrees to hold KGIS harmless from any and all damage, loss, or liability arising from any use of this map product.





KGIS Copyright - 2024

© KGIS

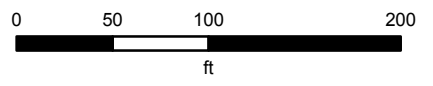
# 9411 S NORTSHORE DR

3-H-24-VA  
LARA SIEVERS

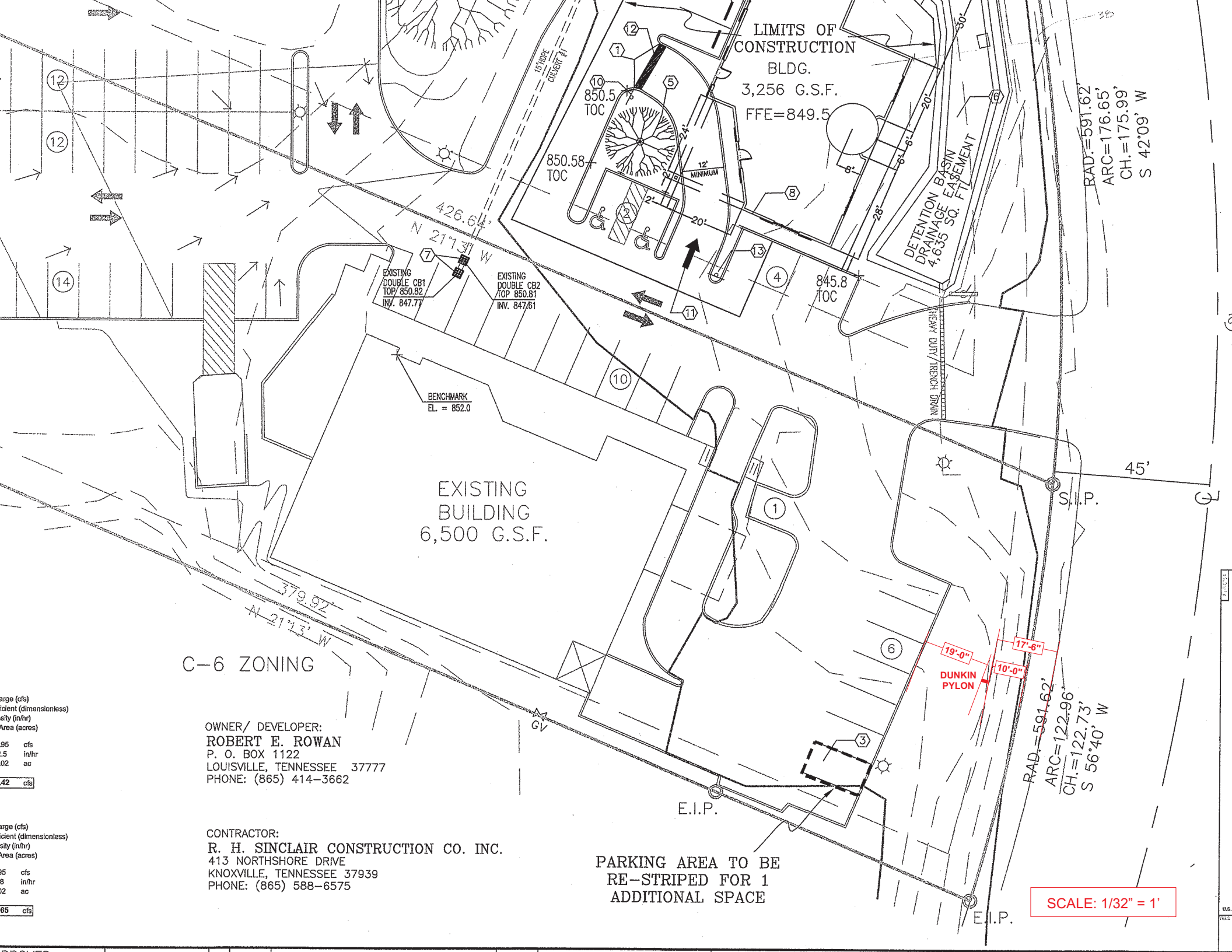
## Knoxville - Knox County - KUB Geographic Information System



Printed: 2/13/2024 at 6:55:28 AM



KGIS makes no representation or warranty as to the accuracy of his map and its information nor to its fitness for use. Any user of this map product accepts the same AS IS ,WITH ALL FAULTS, and assumes all responsibility for the use thereof, and futher covenants and agrees to hold KGIS harmless from any and all damage, loss, or liability arising from any use of this map product.



LIMITS OF CONSTRUCTION  
 BLDG.  
 3,256 G.S.F.  
 FFE=849.5

N 426.64'  
 N 217.31' W

EXISTING DOUBLE CB1  
 TOP 850.82  
 INV. 847.77

EXISTING DOUBLE CB2  
 TOP 850.81  
 INV. 847.61

BENCHMARK  
 EL = 852.0

EXISTING BUILDING  
 6,500 G.S.F.

C-6 ZONING

OWNER/ DEVELOPER:  
**ROBERT E. ROWAN**  
 P. O. BOX 1122  
 LOUISVILLE, TENNESSEE 37777  
 PHONE: (865) 414-3662

CONTRACTOR:  
**R. H. SINCLAIR CONSTRUCTION CO. INC.**  
 413 NORTHSHORE DRIVE  
 KNOXVILLE, TENNESSEE 37939  
 PHONE: (865) 588-6575

PARKING AREA TO BE  
 RE-STRIPED FOR 1  
 ADDITIONAL SPACE

RAD.=591.62'  
 ARC=176.65'  
 CH.=175.99'  
 S 42°09' W

RAD.=591.62'  
 ARC=122.96'  
 CH.=122.73'  
 S 56°40' W

19'-0"  
 17'-6"  
 10'-0"  
**DUNKIN PYLON**

**SCALE: 1/32" = 1'**

Flow (cfs)  
 Coefficient (dimensionless)  
 Velocity (ft/hr)  
 Area (acres)

0.95 cfs  
 0.5 in/hr  
 0.02 ac

0.42 cfs

Flow (cfs)  
 Coefficient (dimensionless)  
 Velocity (ft/hr)  
 Area (acres)

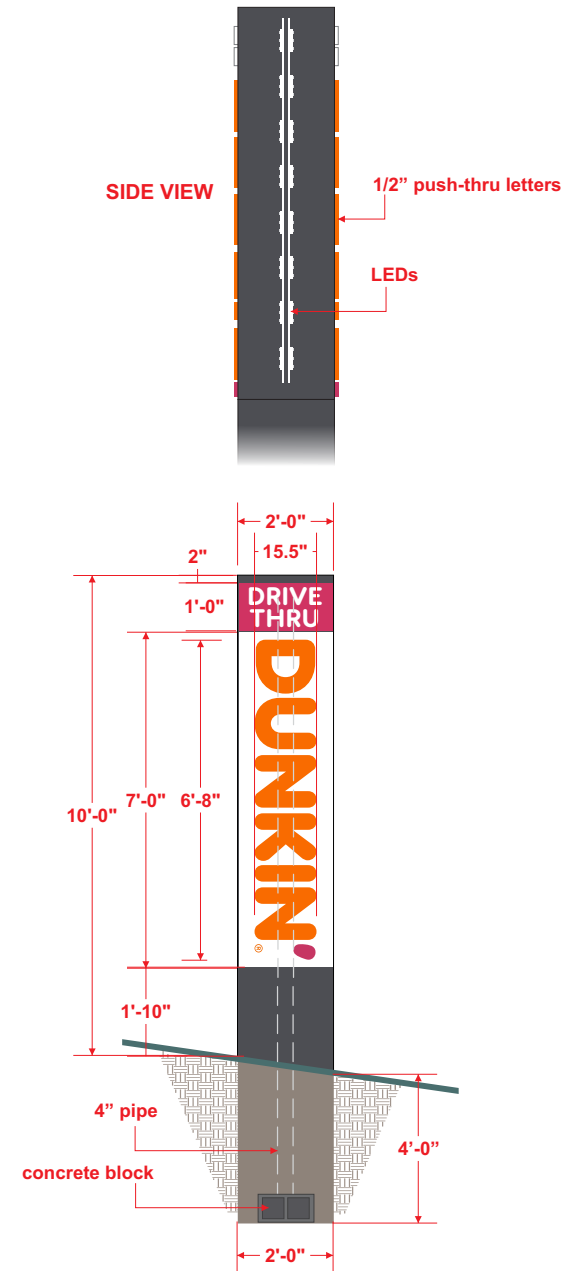
0.95 cfs  
 0.8 in/hr  
 0.02 ac

0.65 cfs

ENCLOSURE

U.S. MAP





**VINYL COLORS**

3M 3630-3123  
Orange Translucent

3M 3630-1379  
Magenta Translucent

3M 7725-41  
Gray Translucent

PMS 7635 c

PMS 3564 c

PMS 7540

**SIGNCO** inc.  
PLASTIC. NEON. ELECTRONIC

This drawing is the property of SIGNCO, Inc. & to be used for contractual purposes between the customer & SIGNCO, Inc. only. Unauthorized use of this information will result in claims up to 1/3 value of the job represented on this drawing.  
**VALUE OF THIS DRAWING: \$500.00**

**SIGN & FAX BACK SO THAT WE MAY APPROVE YOUR ORDER.**

FAX: 865.947.2089 info@signco-inc.com

- APPROVED  
 APPROVED W/CHANGES  
 REVISE & RESUBMIT

**APPROVAL SIGNATURE**

**FILE LOCATION:**

Baker/D/Dunkin Donuts

**LOCATION:**

Knoxville, TN

**SALES REPRESENTATIVE:**

Baker Jones

**FILE:**

Dunkin Pylon Northshore 10ft

**DATE:**

12-20-2023

**DRAWN BY:**

Tiffany Poling

**SCALE:**

1/4" = 1'





